



**b2B**  
FURNITURE

*TURKISH*  
*DESIGN & CONTRACT FURNITURE*  
*MANUFACTURER*  
*GENERAL*  
*E-CATALOG*

---

b2B furniture and audiovisual stands feature state-of-the-art design and top quality materials, adding value to your lifestyle with a sophisticated and contemporary approach. Yet they are affordable. Choose confidently from our contemporary designs that will compliment your personal style and the carefully selected furnishings in your home.

---

## INDEX

MULTIMEDIA CABINETS	4-17
SIDEBOARDS	18-49
CHEST OF DRAWERS & BEDSIDES	50-57
COFFEE & SIDE TABLES	58-75
SHELF & BOX SYSTEM	76-85
TABLES	86-115
OFFICE	116-137
CHAIRS	138-145
MIRROR	146-153
FEATURES	154-163
COLOR VARIABLES	164-169



## MULTIMEDIA CABINETS

Our multimedia cabinets offer a modular concept that displays and discreetly stores all your audio/video equipment right at the heart of your living space.

Contemporary designs of lacquered tempered glass, acid etched glass, porcelain and wood have never been so beautiful and completely timeless. Come and discover the perfect balance between industrial design and handicrafts.

Multimedia cabinet has created thanks to the modular system feature.  
Fronts, sides and top panels covered with taupe decor ceramics.  
Soundbar can be placed behind the perforated door.







Elements cabinet with wall hanging vitrine - transparent glass door with led lighting system.





Multimedia furniture with special perforated front doors. The speakers and A/V equipments remain hidden and easily accessible.





## SIDEBOARDS

---

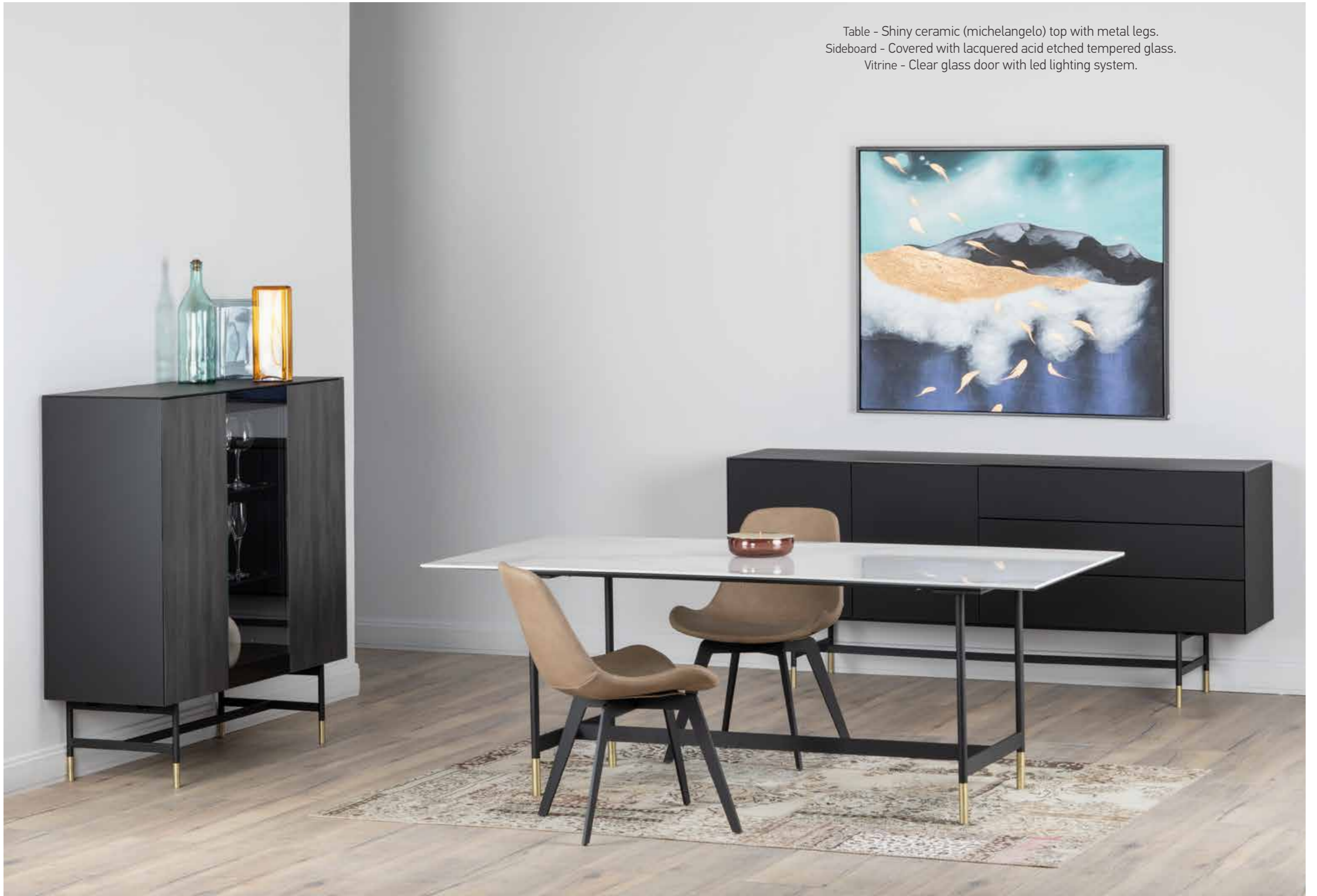
Available in both wood base and metal frame, Sonorous sideboards offer a modular system with a rich collection of colors and shapes.

The series allows to freely position shelves, drawers or display cases, and to choose from a wide variety of materials and exclusive finishes including a continuous delicate glass top.

---



Table - Shiny ceramic (michelangelo) top with metal legs.  
Sideboard - Covered with lacquered acid etched tempered glass.  
Vitrine - Clear glass door with led lighting system.





With transparent glass sideboard models, you can create a more elegant dining room by highlighting your objects and dinnerwares. Slim design table legs are ideal for more minimalist environments.



Our new color verde muschio can help you to create more elegant interiors.  
Also patch coffee & side table set can add more contrast.







Fully ceramic (invisible white) covered sideboard with marble effect. Accompanied with table top - gray stone textured ceramic (pietra grey).





Indispensable for your dark interior spaces. Great choice for displaying your objects, glasses and dinnerware. Shiny noir desir door & coffee table set will be a perfect match.





## Custom Solutions

With sheet metal covering, you can achieve a thinner edge appearance and metallic matte surface compared to glass. You will find the color that appeals to your taste from our wide range of metal colors.



Sideboard - Front doors reeded glass with deep vertical texture.  
Special effect created when the light coming on the surface.



Available in the Sonorous glass collection  
colors and metal collection colors.





## Textured Edge Sideboard

Body and surface continuity.





Sideboards front doors with shiny Altissimo ceramic (top) and Noir desir (left).









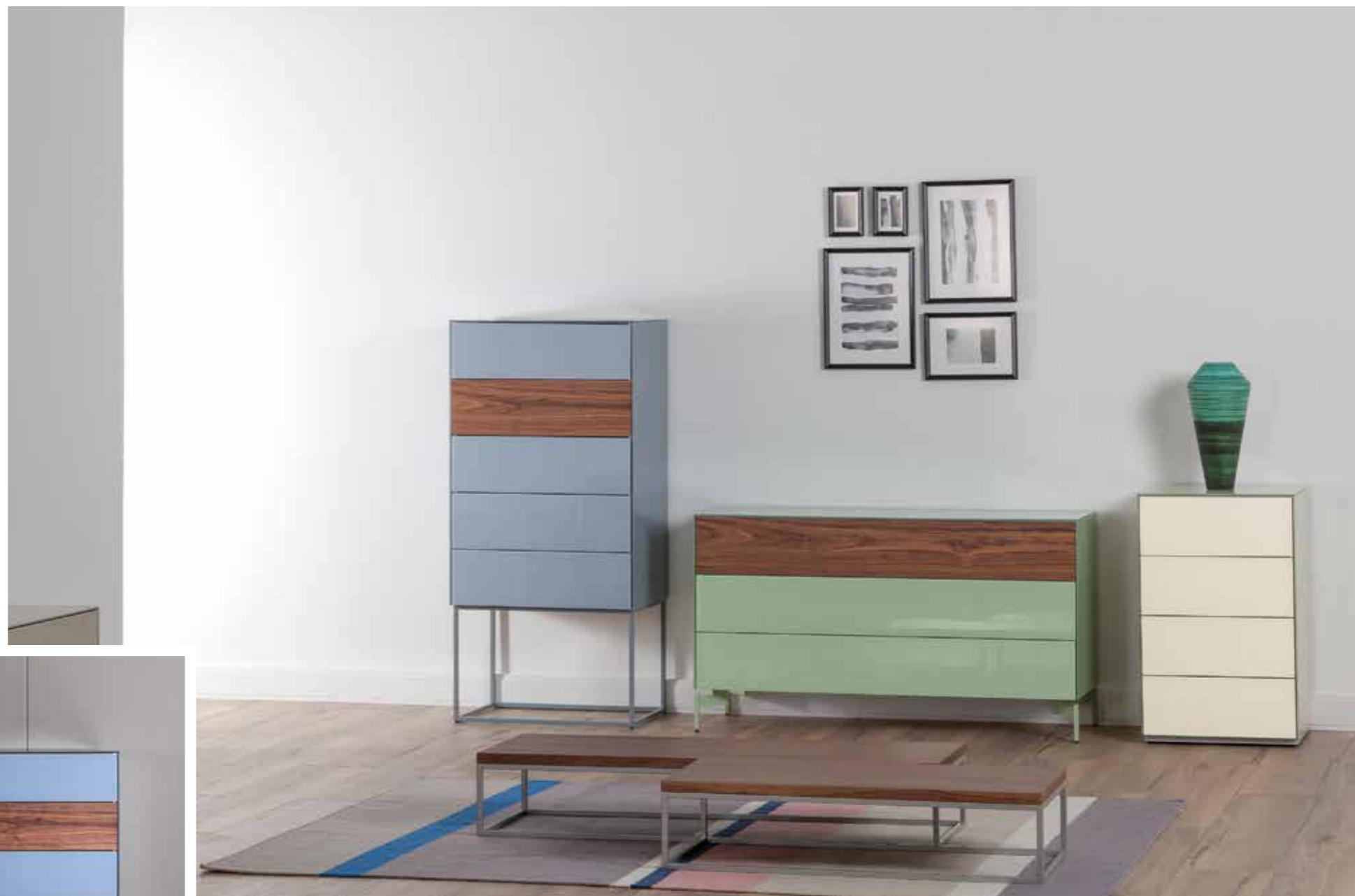
## CHEST OF DRAWERS & BEDSIDES

---

Sonorous offers functional and complementary units in a new approach to modern living. Offering storage space for the entire home, these units appeal to all tastes with glossy or matte glass-covered body with a wide range of colors, and additional ceramic or wood-covered cover options.

---

Sonorous chest of drawers and bedside tables offer you very wide range options for storing your clothes or any other things that need storing.









## COFFEE & SIDE TABLES

---

Adapting to any space for any use, Sonorous coffee and side tables are ideal for mixing heights, colors and bases for adding a vibrant touch to all living areas. A wide range of tops and bases that can be arranged in numberless ways, offer added space for eating, working or just enjoying coffee.

---



Patch coffee table & side table set.





## Hydro Lift

Adjusting effortlessly on a smooth pneumatic cylinder, a simple push or pull on the hydro lift tabletop glides it to the perfect height. The table's slim and sturdy base slides easily under a sofa or chair, always keeping the versatile surface close at hand for work or play.



Two drawers adds versatility  
and very elegant looking ES80 coffee table.



Marble effect ceramic top (mocha perla)  
brings nature to your living room.



Stylish boomerang  
shaped coffee table legs.







Set of coffee & side tables.  
Glass and ceramic tops (anthracite).



## SHELF & BOX SYSTEM

---

A bookshelf, a sideboard or a showcase... Shelf & Box finds its place in all living areas ranging from domestic spaces to professional settings. Featuring steel bars that allow for multiple storage options, the system can be customized with different materials, colors and finishes.

---















## TABLES

---

At home for dining and study or in the office as a prestigious meeting table or desk... Great craftsmanship of Sonorous tables bring stylish details to all living spaces. Options for tops, bases and dimensions make it possible to combine all the elements with each other, just as you wish.

---

# Wings





New rod table legs. Gold painted metal frame and black solid wood legs are creating great contrast to your dining room.



## Jetty Table

Jetty leg can be applied on circular or square table tops for use of coffee shops, restaurants, kitchens etc. Leg made of sheet metal and painted with powder coated paint. Table top is 8 mm safety tempered glass and can be painted wide range of glass colors. Top surface can be either shiny or acid etched.









Acid etched glass table top.  
Available in the Sonorous  
glass collection colors.  
Thick and tempered safety glass.  
Matte surface don't reflect any light  
or object. Simple and plain.







## Textured Edge Table Tops

The main characteristic of "Textured edge" ceramic is their body and surface continuity, both as material and look. The table tops are resistant to impact, stains and scratches.



## BUTTERFLY

Butterfly extension mechanism could add more space for your guests.  
Wheels on moving leg prevent scratching your floor while opening action.



## TANDEM BUTTERFLY

Tandem Butterfly mechanism has an ability to perform simultaneous moving to both ways. Mechanism works in harmony. You only need to work from one side of the table to watch your table extends gracefully.



## MOVE UP

This simple and elegant mechanism can easily increase the size of the table by half through two simple motions.





## TANDEM MOVE UP

You can increase table size by simple pull & up movement with this synchronized extension mechanism.



## LIFT OPENING

Lift opening extension mechanism offers you smooth closing and stylish look. Aluminium mechanism makes it possible to use on outdoors.



# OFFICE

---

Love your work space. With fixed and mobile elements and sturdy metal construction, Sonorous office furniture combine innovative design with modern engineering, creating an inspiring working space for all.

**EPSILON**

Smart sophistication. From a generously-sized keyboard drawer to cable-concealing modesty panels, impeccable attention to detail is at the heart of Epsilon's streamlined and elegant design.

---



## Managing Desk



**L Desk**  
Example harmony of  
Sideboard, Elements and Office series.





## Desk Plus

Simple working environments for you and your guests,  
away from unnecessary details and not straining the eyes.



## Work Desk

Small and compact workspace with movable pedestal with drawers.  
A small space in your home Office will suffice.





## Meeting Table

In this meeting table for 12 people, every detail that the participants may need has been thought. Power sockets, network sockets and even usb sockets.





## Work Lift

The standing, sitting, and everything-in-between desk.  
These height-adjustable desks take an entire workstation from sitting to standing, and back again, with the single touch of a keypad.





## Divide

It is a unit where you can store files and folders that can be used by both sides by dividing the working environment into two.

# Epsilon

Keyboard drawer on desks,  
Cable management,  
File organizer drawer in cabinets and caisson,  
Mobilized cabinets,  
Sturdy metal construction on tables.





designed by **BDi**

Thanks to the height compatibility between the Epsilon series products, each unit comes next to the other, allowing the creation of customized designs for the environment and for the individual.



designed by **BDi**

# CHAIRS

---

Wide-ranging and modern designed Sonorous chairs are suitable for both homes and commercial areas including offices, restaurants, hotels and more. They come in various options including metal leg alternatives and plenty of colors. Contemporary, elegant and beautifully framed, the body may be created with leather, artificial leather and fabric according to your taste.

---



CHAIR BODIES

S1



S2



COMPLETE CHAIRS

S3



S6



S7



S4



S5



CHAIR LEGS

HORIZON



LOFT



TRAIL



STAR (FIX OR ROTATE)









## MIRROR

A mirror can reflect classic, modern and vintage features, with a strong visual impact and unique in its kind. Sonorous mirrors are select interior design item, thanks to the perfect balance between it's materials and its design.

The different colours of the mirrors recall craftsmanship; the bronze finishes have an exquisite retro feel and the decoration on the surface, both simple and elegant, enhances its fine beauty.







# FEATURES

## MODULAR CONSTRUCTION (EX / SB)

Modular construction allows you to arrange cabinets as you require, floor standing, attached to your walls, or both, you decide. A system of specialist furniture that combines elegance, technical performance and perfection.



## CABLE MANAGEMENT (EX)

Cables are an essential part of your system, but you don't want to see them. Multiple and discrete horizontal and vertical cable channels make for easy access for cabling through shelves and cabinets whilst keeping them out of sight within the cabinet.



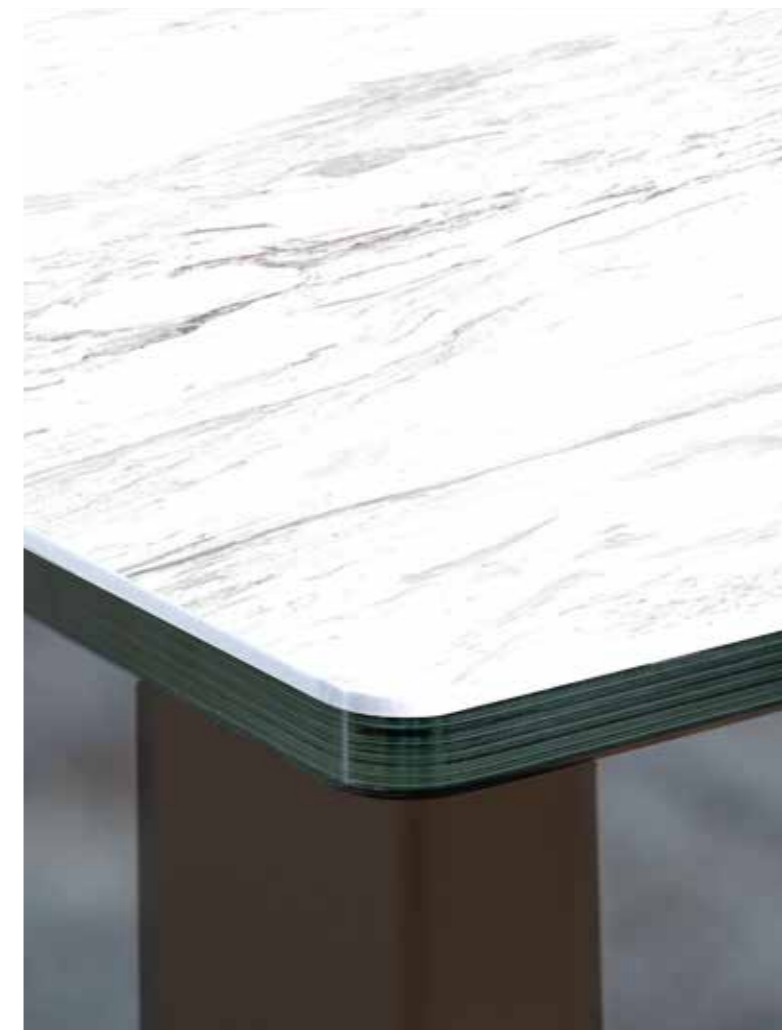
## ROTATING MOUNT (EX)

Brushed anodised aluminium profile is used for TV mounting and provides rotating and an integrated cable management system.

## ACID ETCHED GLASS / BACK PAINTED (EX/SB)

Acid-etched glass is annealed glass treated with acid to permanently change its appearance, making it smoother than sandblasted glass.

We strategically color the reverse side of a piece of glass using advanced equipment renowned for precision, spray painting unit and tempering oven, to ensure the finished product is evenly covered. By coupling the beauty of back-painted glass with its practicality, you'll have a winning combination for endless applications.



## PORCELAIN & GLASS LAMINATION

Porcelain can be used as the skin for surfaces and structures, designed to multiply intended uses and applications. (Tabletops, sideboard body or front, coffee tables etc.)

Laminated porcelain & glass is a type of safety material that is made of two or more panels of joined together by a layer of plastic (EVA). You can think of this joining as creating a glass & porcelain sandwich. It is safer, if broken, glass or porcelain fragments remain in place rather than breaking into dangerous shards.

Using this new concept that combines light weight and technical performance, it is now possible to create genuine products or installations with the added benefits that come with ceramic technology. The very nature of the material also lets designers apply each of these possibilities in indoor and outdoor environments to develop smooth, curved and even backlit surfaces.



**ACOUSTIC FABRIC DOOR (EX / SB)**

Amplifier, media players and game consoles can all be stored behind flaps which are covered with acoustic fabric door or perforated door. Designed to ensure adequate ventilation so your devices don't overheat. A sound bar, loudspeakers and subwoofers can be placed and operated, hidden from view, without affecting performance.



**PERFORATED DOOR (EX / SB)**



**CERAMIC DOOR (EX / SB)**

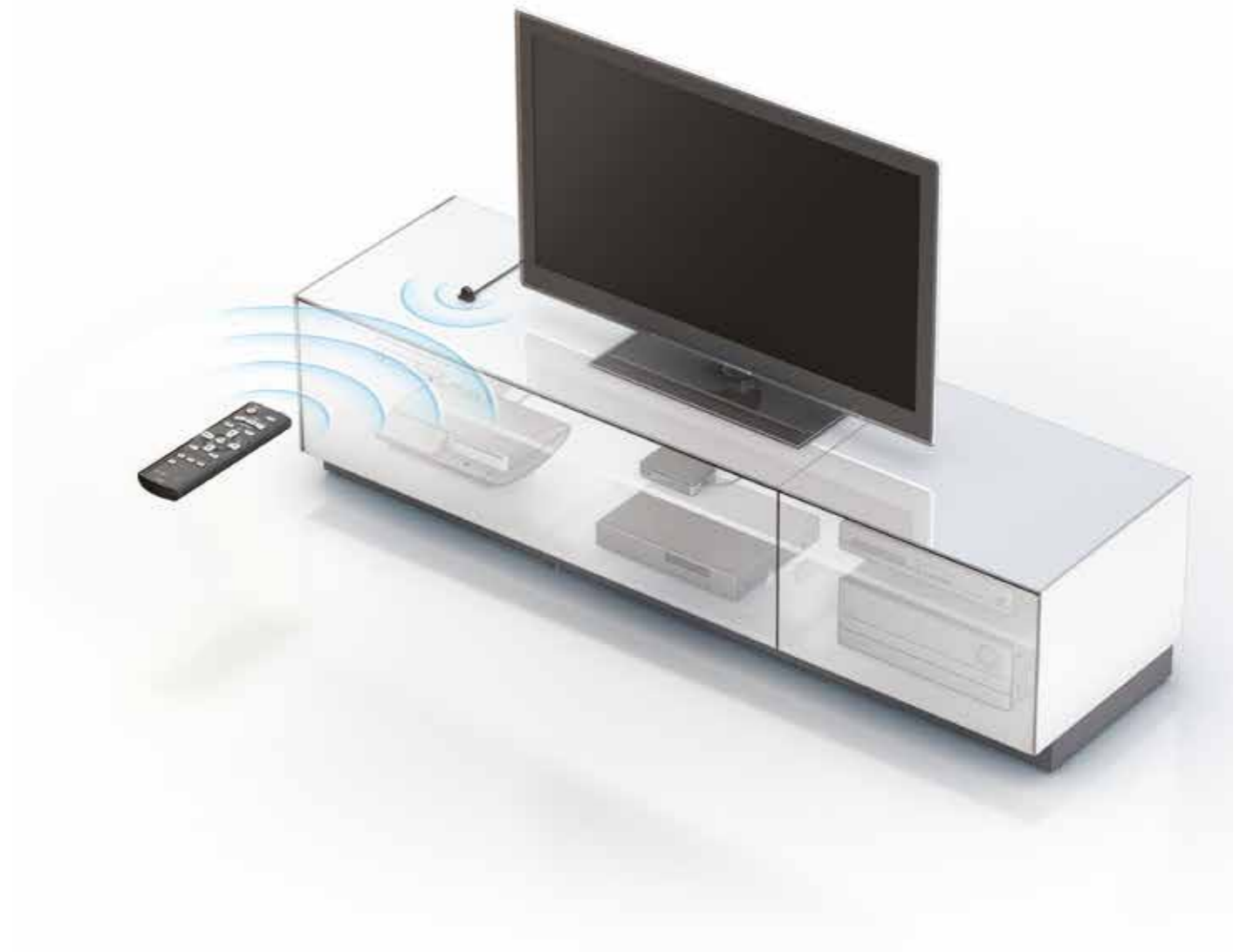
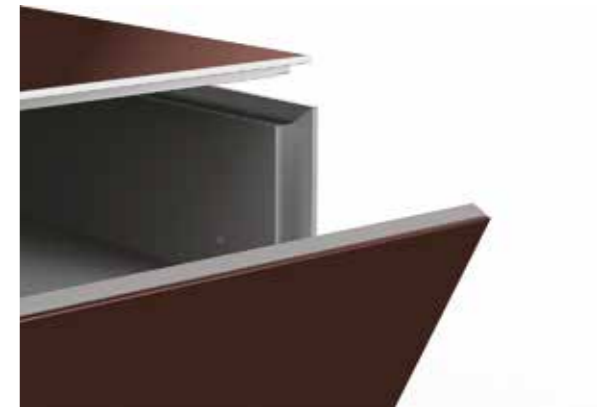


**VENEER DOOR (EX / SB)**



**ANODISED ALUMINIUM EDGES (EX)**

Careful use of anodized aluminium profiles creates impact resistance edges



**IR REPEATER (EX)**

Control all your equipment with your remotes, yet keeping it out of sight. Our Infrared Repeater system relays remote control signals to your equipment within the cabinet.



**DRAWER (EX / SB)**  
Drawers incorporate high performance and luxury "push to open" mechanisms.



**FLAP DOOR MECHANISM (EX / SB)**  
High-quality flap mechanisms ensures soft opening and closing.



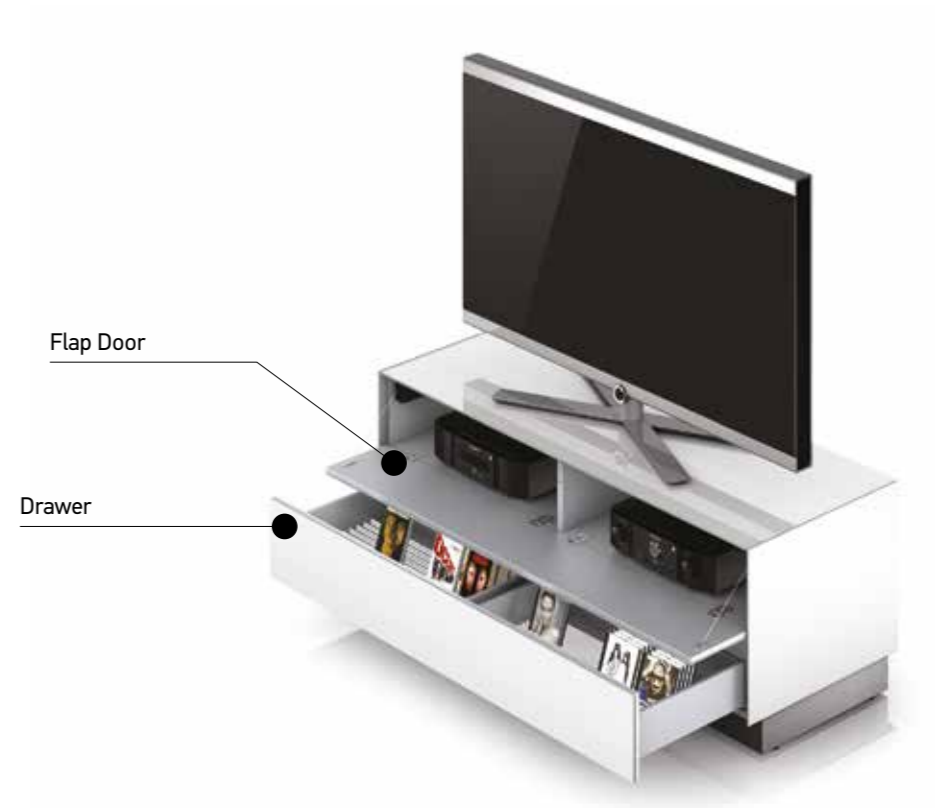
**PUSH TO OPEN (EX / SB)**



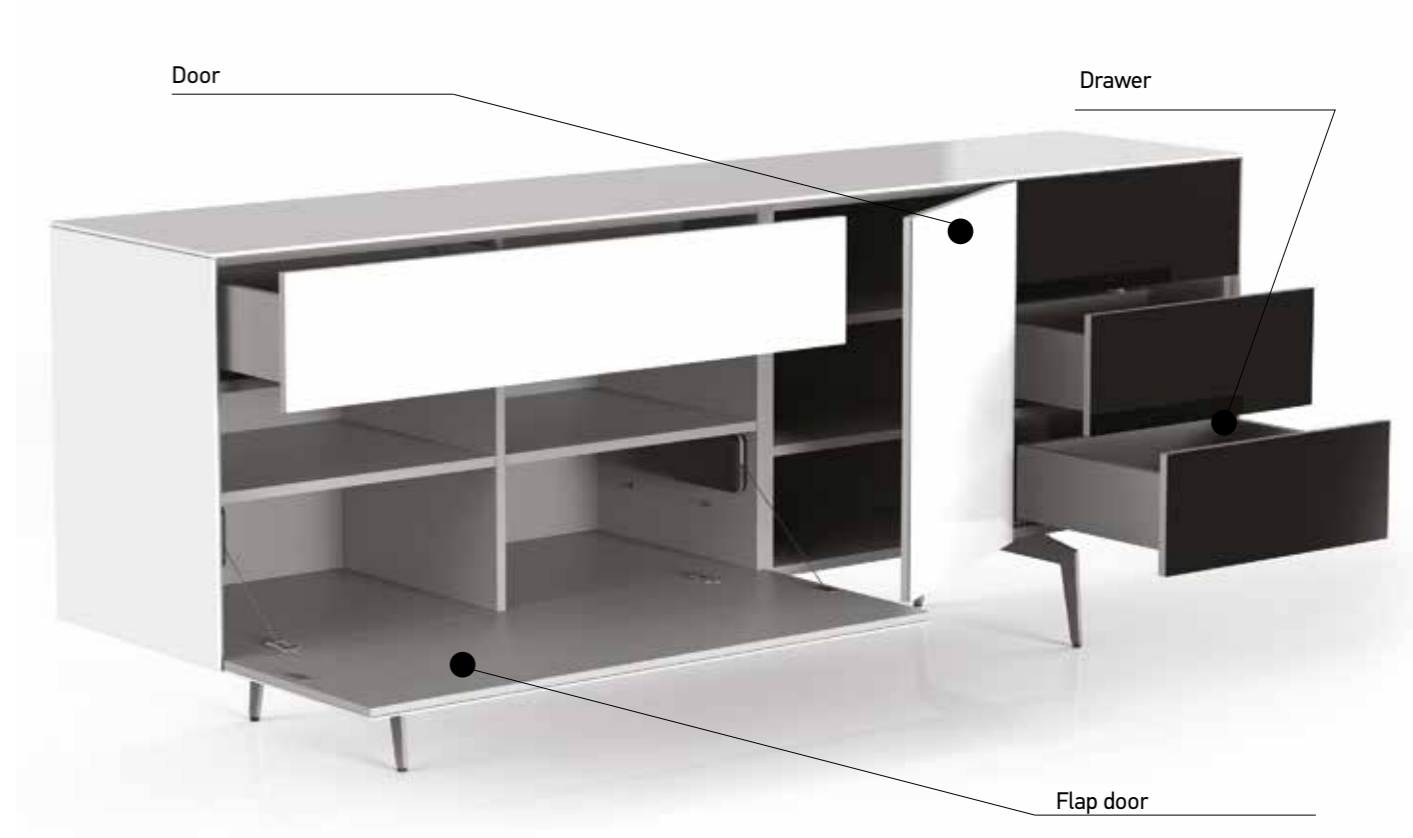
**ADJUSTABLE LEVELLING FEET FOR METAL LEGS (EX / SB)**



**ADJUSTABLE LEVELLING FEET FOR BASES (EX / SB)**



**DRAWER SLIDES & FLAP DOORS**



**DRAWER SLIDES  
FLAP DOORS & SIDE OPENING DOORS**



CHOICE OF CABINET LEGS



CRAB 13 cm



PLAIN 13 cm



CAGE 40 cm



CAGE 20 cm



BASE 3,5 cm / 9 cm



CLUB 28 cm



SPIKE 20 cm / 13 cm



TUBE 13 cm

CHOICE OF TABLE LEGS



CHEVRON



GATE



CLUB



WINGS



WARP



ROD



MESS



CRESCEND



PORTAL



TRAPEZOID



JETTY



CONE



VERTEX



POSE



NET



BISTRO LIFT



SLIM GONDOLA



GONDOLA



PORTAL (ALUMINUM)



PILLAR (ALUMINUM)

## COLOR VARIABLES

Finishes to match different tastes and needs. Tempered glass colors and wood finishes, allow you to choose and compliment your style.

### GLASS COLORS (Shiny,<sup>1</sup>Matte,<sup>2</sup>Reeded)

### CATEGORY (A)

				
BLK BLACK	GRP GRAPHITE	OLV OLIVE	VPL VERDE PALLIDO	SBA SABBIA
				
BRD BORDEAUX	RED RED	TRS TERRA DI SIENA	CPR COPPER	RVR ROSSO VERMIGLIO
				
CPN CAPPUCCINO	YLW YELLOW	SFR SAFFRON	PNA PANNA	WHT WHITE
				
BLU DARK BLUE	GRA GRIOGIO ARGENTO	FYO FJORD	GRC GRIOGIO CHIARO	PIT PISTACHIO
				
DBR DARK BROWN	BRW BROWN	BGE BEIGE	RSP ROSA PESCA	BTN BETON
				
ABR ANTIQUÉ BRONZE	VMS VERDE MUSCHIO	CON CONCRETE		

<sup>1</sup>For matte colour options, "C" should be added to the colour code. (e.g. BLKC)

<sup>2</sup>For reeded (wavy) colour options, "R" should be added to the colour code. (e.g. BLKR)  
Please note that reeded glass can be applied only dark colors such as BLK,GRP,BRD. Etc.

## METAL COLORS

## CATEGORY (B)

				
BLK BLACK	SGR STORM GREY	GRP GRAPHITE	EMP EMPERADOR	SBG SOFT BEIGE
				
BRD BORDEAUX	RED RED	TRS TERRA DI SIENA	RVR ROSSO VERMIGLIO	CPN CAPPUCCINO
				
DBR DARK BROWN	VPL VERDE PALLIDO	RSP ROSA PESCA	SFR SAFFRON	PNA PANNA
				
GRA GRIOGIO ARGENTO	SBA SABBIA	GRC GRIOGIO CHIARO	SLV SILVER	WHT WHITE
				
ABR ANTIQUÉ BRONZE	FYO FJORD	BRZ BRONZE	GLD GOLD	CON CONCRETE

CERAMIC COLORS (Matte)

CATEGORY (C)



ANT, 3 mm  
ANTHRACITE



EMP, 3 mm  
EMPERADOR



TRV, 3 mm  
TRAVERTINO



MPR, 3 mm  
MOCHA PERLA



OXF, 3 mm  
OXIDO-FLAME



OXC, 3 mm  
OXIDO-ICE



PLS, 3 mm  
PALISSANDRO



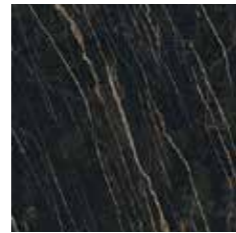
TPE, 3 mm  
TAUPE



BSV, 3 mm  
B.S.VENATO



ALTM, 5 mm  
ALTISSIMO



NDSM, 3 mm  
NOIR DESIR



NIW, 5 mm  
INVISIBLE WHITE



DCR, 5 mm  
DIAMOND CREAM



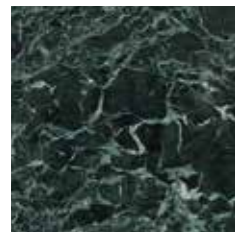
STR, 5 mm  
STATUARIETTO



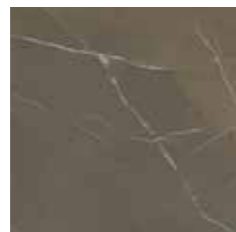
NGR, 5 mm  
NERO GRECO



1PIGRB, 5 mm  
PIETRA GREY



1VAB, 5 mm  
VERDE ALPI BOC.



2PPTF, 5 mm  
PIASENTINA TAUPE



2PCNF, 5 mm  
CARDOSO NERO



2PPGF, 5 mm  
PIASENTINA GRIGIO

1 HAMMERED SURFACE

2 TEXTURED EDGE

CERAMIC COLORS (Shiny)

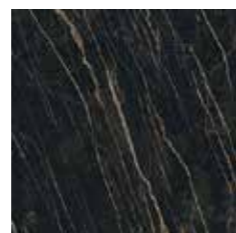
CATEGORY (C+)



ALTS, 5 mm  
ALTISSIMO



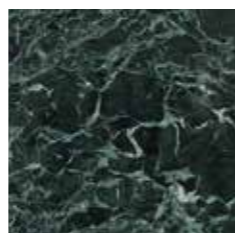
CAL, 5 mm  
MICHELANGELO



NDSS, 5 mm  
NOIR DESIR



PIGRS, 5 mm  
PIETRA GREY



VAL, 5 mm  
VERDE ALPI LUC.

WOOD DECORS

CATEGORY (D)



CWN  
CASTELLO WALNUT



NOAK  
NATURAL OAK



BNW - BLACK  
NORTH WOOD

VENEER DECORS

CATEGORY (E)



WNTV  
WALNUT



OAKV  
OAK

FABRIC COLORS

CATEGORY (F)



BLK  
BLACK



GRY  
GREY

MIRROR COLORS

CATEGORY (G)



PL  
PLAIN(CLEAR)



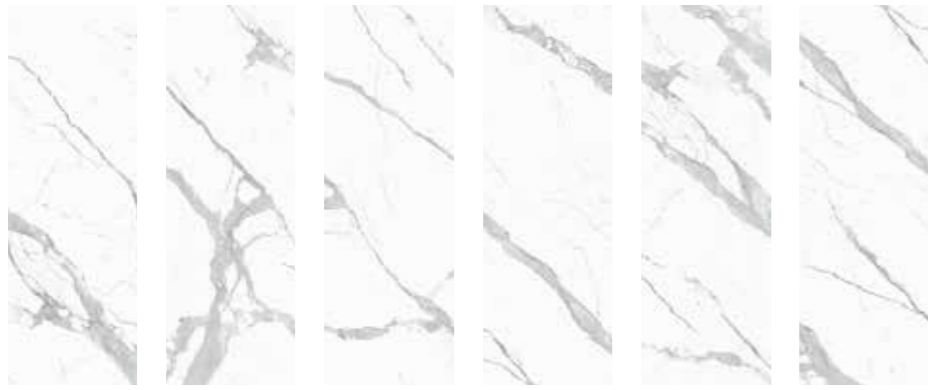
BR  
BRONZE



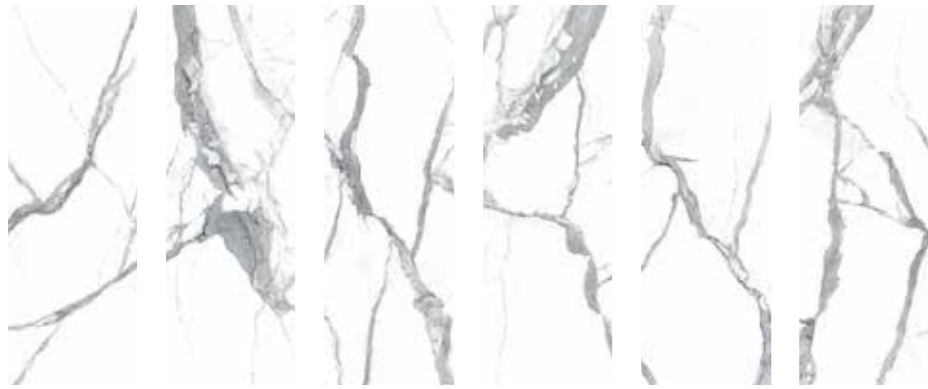
SM  
SMOKED

Ask for thickness compatibility.

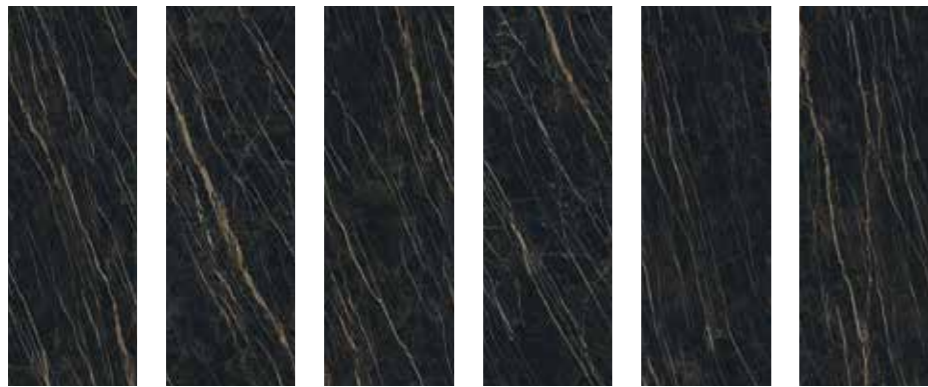
**BSV (B.S. VENATO)**



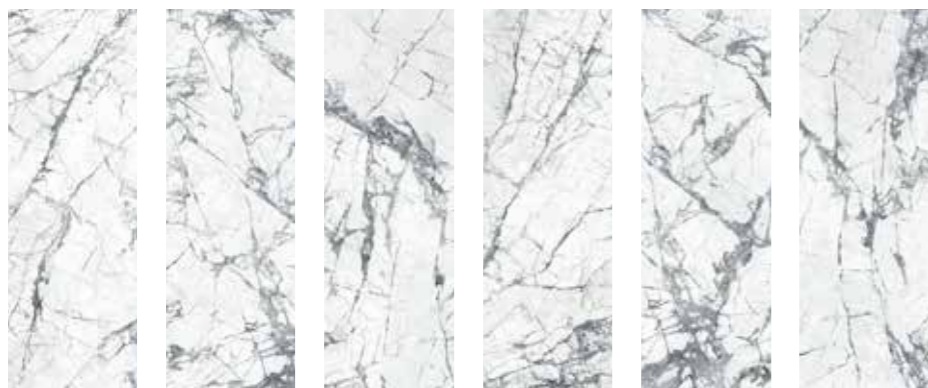
**ALTM / ALTS (ALTISSIMO)**



**NDSM / NDSS (NOIR DESIR)**



**NIW (INVISIBLE WHITE)**



**PIGRB / PIGRS (PIETRA GREY)**



**CAL (MICHELANGELO)**



**VAL (VERDE ALPI)**



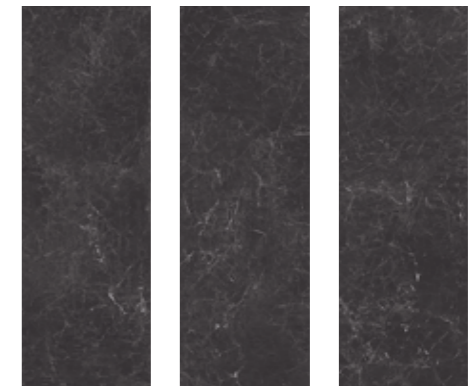
**DCR (DIAMOND CREAM)**



**STR (STATUARIETTO)**



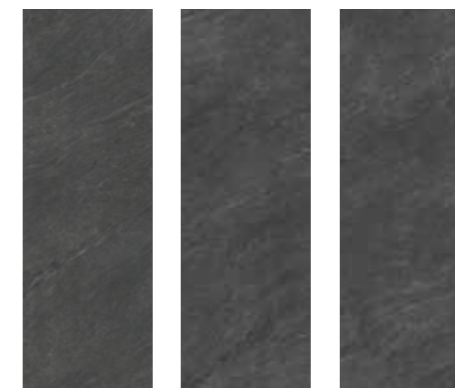
**NGR (NERO GRECO)**



**PPTF (PIASENTINA TAUPE)**



**PCNF (CARDOSO NERO)**



**PPGF (PIASENTINA GRIGIO)**





## CONTACT



+971 50 646 4362



[www.b2bfurnitureprojects.com](http://www.b2bfurnitureprojects.com)



[gcc@b2bfurnitureprojects.com](mailto:gcc@b2bfurnitureprojects.com)



[b2bfurniture](https://www.instagram.com/b2bfurniture)

